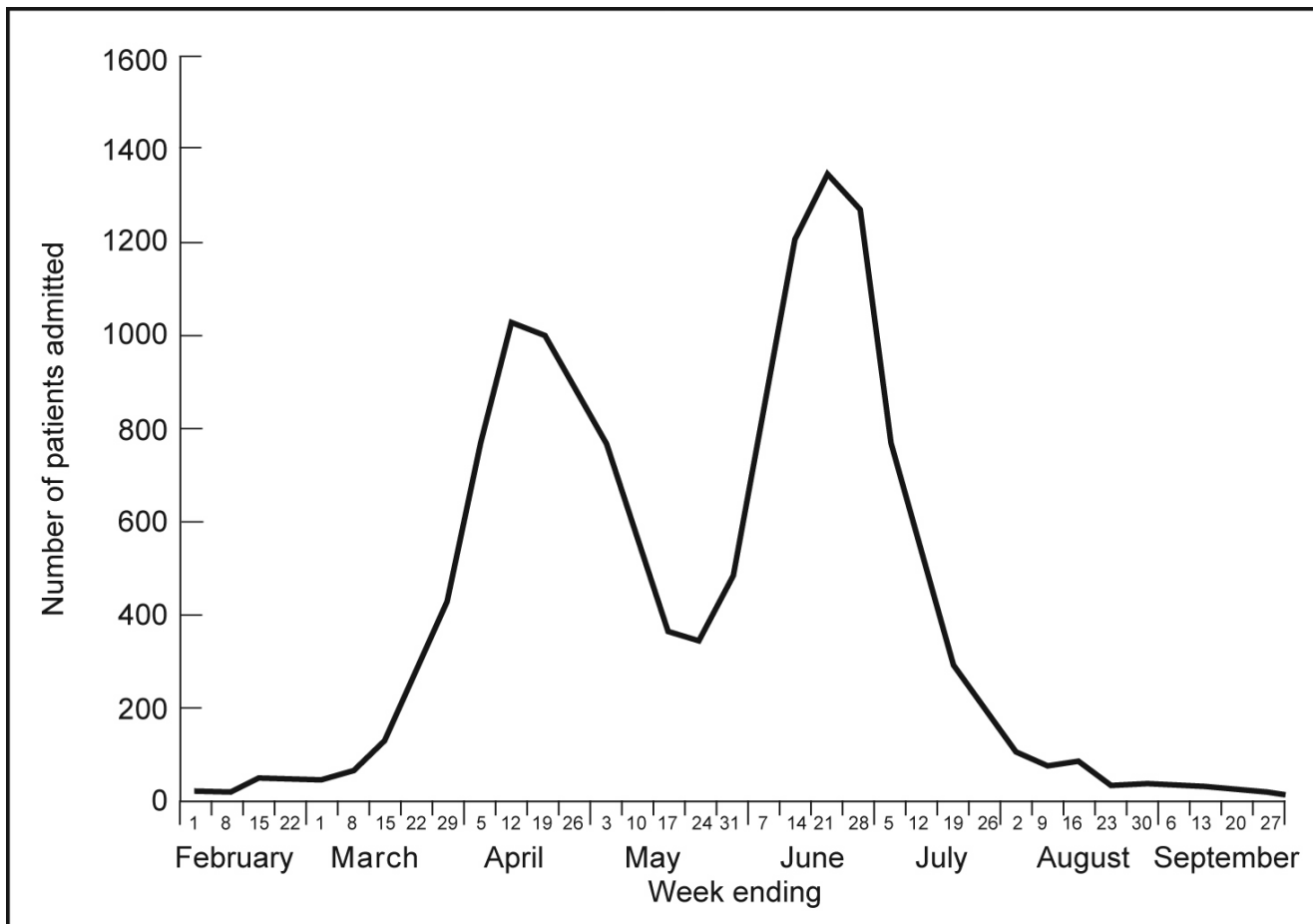


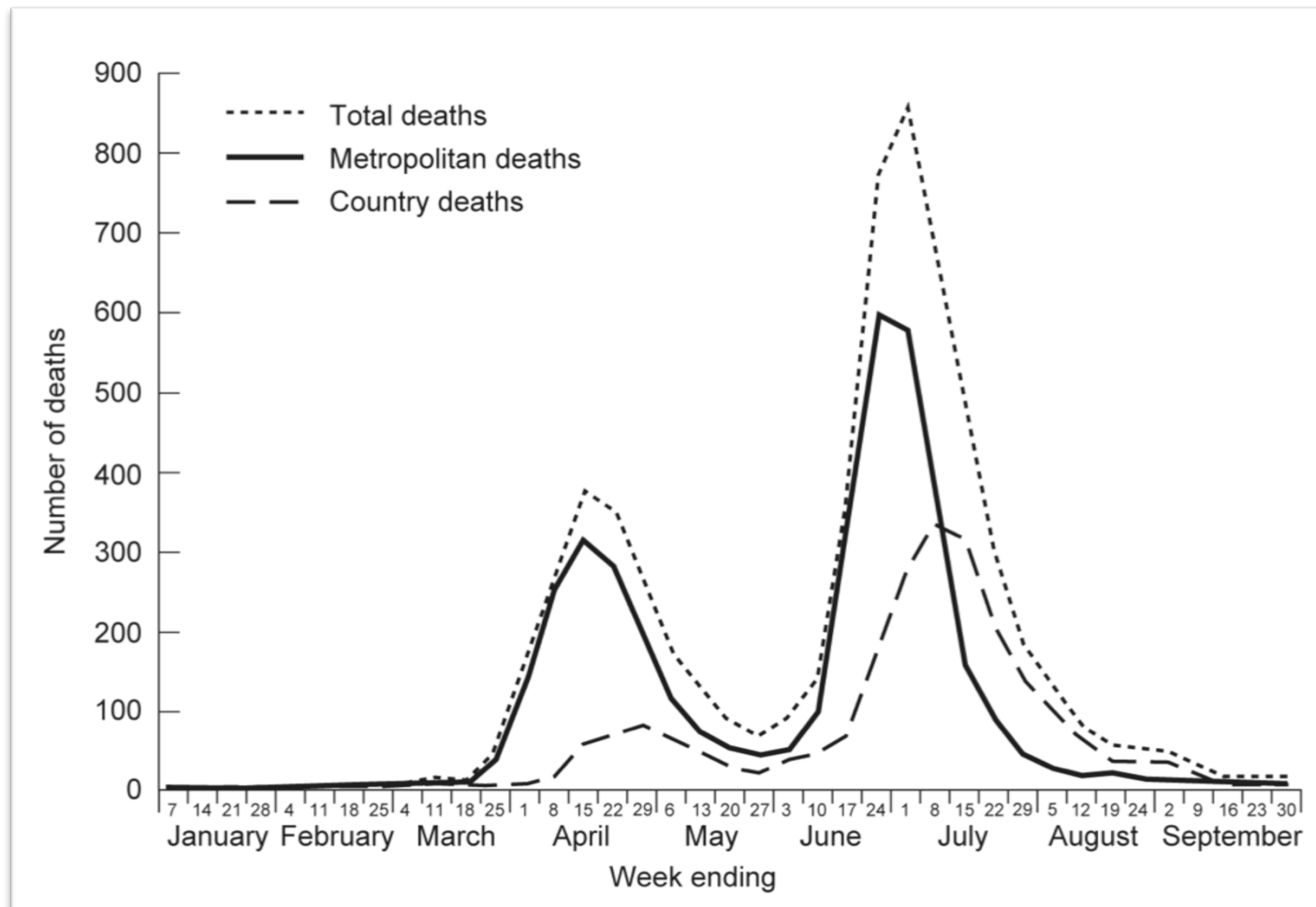
Beware the Flu! The Influenza Pandemic of 1919



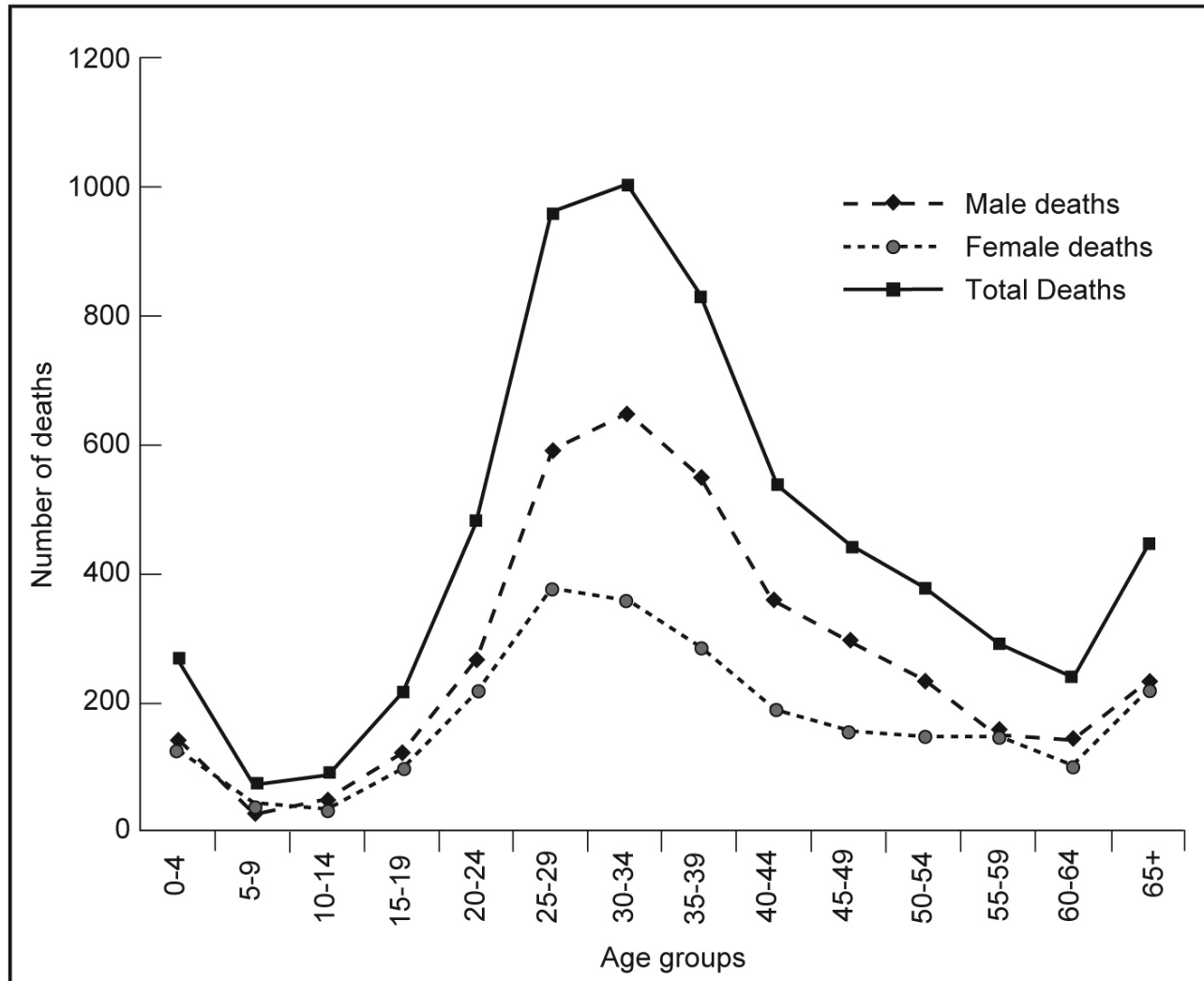
Hospital Admissions Metropolitan Sydney for Influenza 1919



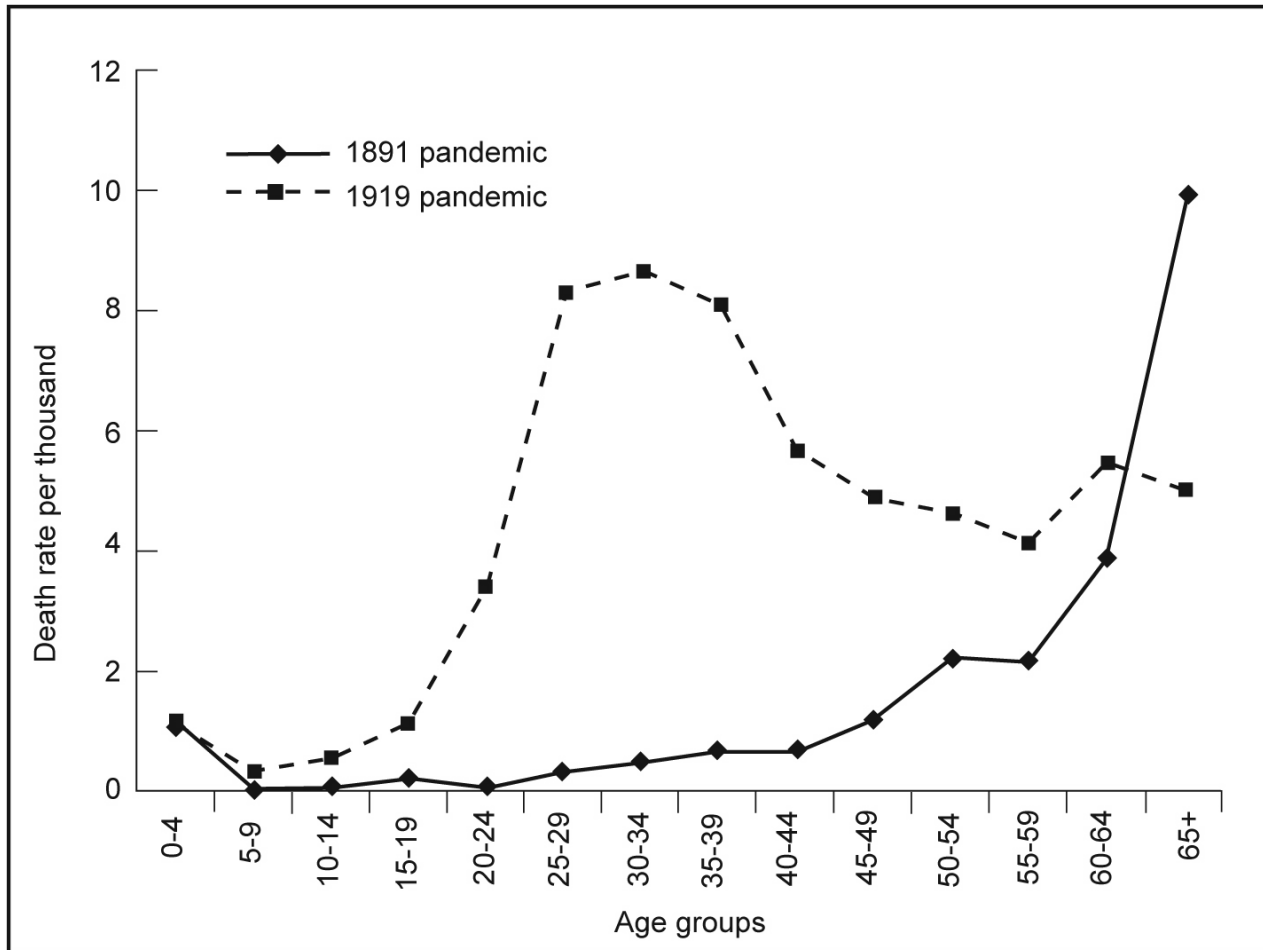
Weekly Distribution of Influenza Deaths, NSW 1919



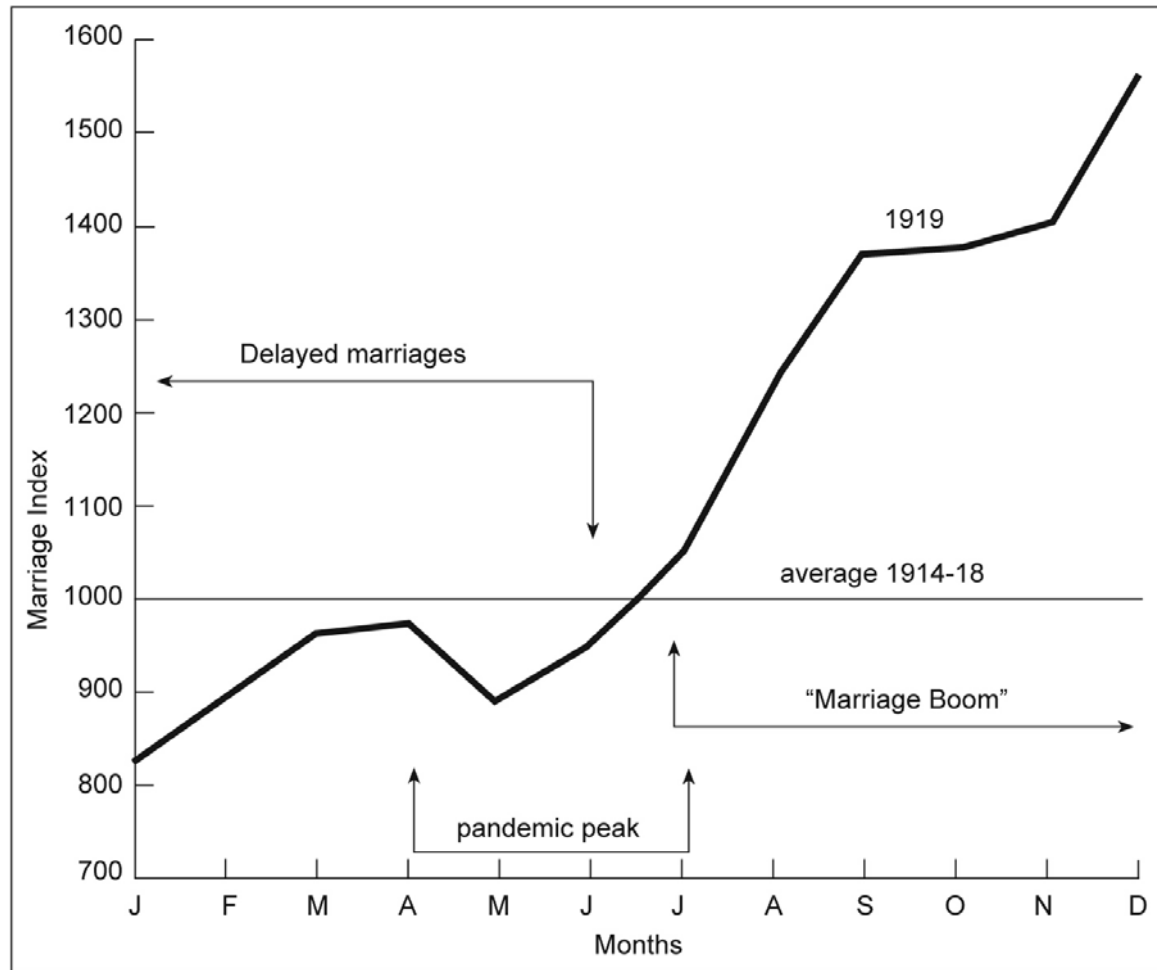
Male and Female Death Rates by Age Group for Influenza 1919



Comparison of Death rates by Age Group for 1891 and 1919 Influenza Epidemics



Impact of Influenza on Marriage Rates Metropolitan Sydney 1919



How The Bulletin Saw the Dispute between NSW and Victoria



“Breaking and Entering”, Cartoon of Struggle Between PM and Qld Govt Over Qld Decision to Close Borders and Institute Formal Quarantine



Influenza Inoculation Hyde Park Depot and Crowd Demanding Inoculation 1919



THE CROWD AT ONE OF THE CITY INOCULATION DEPOTS EARLY IN THE WEEK.

Riley Street Flu Depot, Nurses and Staff.



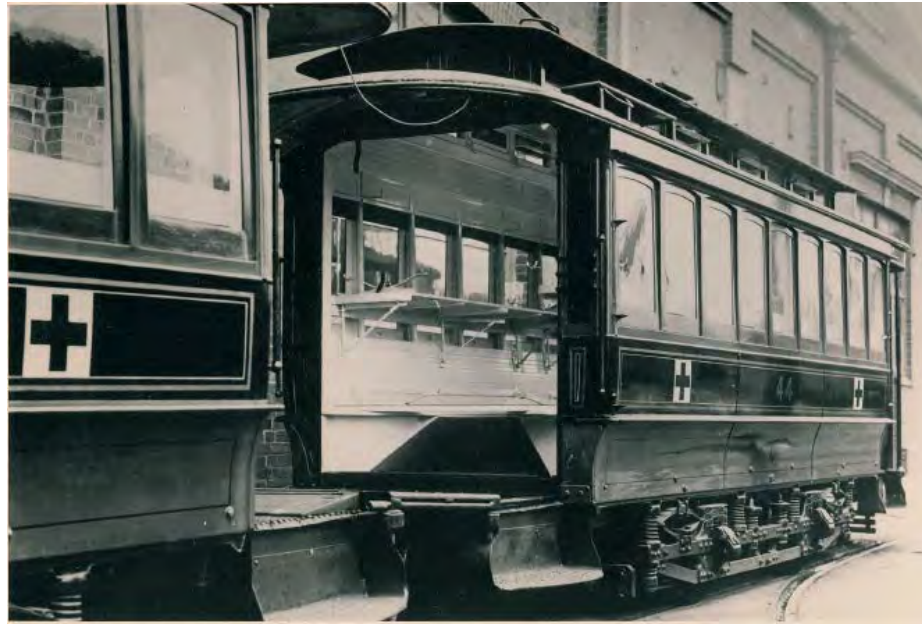
Influenza Ambulance Teams



Hospital Beds Great Hall Melbourne Exhibition Building During Flu Pandemic



Trams Converted to Transport Flu Victims



How *The Bulletin* Saw Flu in 1919



Popular Cures

What are you taking home?
Disease to attack your family?—or Chamberlain's Cough Remedy to protect them and yourself?

You owe it to your family to keep yourself in good health—when influenza, coughs, colds and bronchitis are about run no risk of infection.

Yours for Health — "Granny" Chamberlain

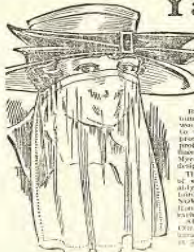
**CHAMBERLAIN'S
COUGH REMEDY**

Popular Cures

Novel, Neat and effective! The

Yashmak Mask

at Myers'



Believing that
sufferers of colds
would take readily
to wearing the Yashmak
Mask for
protecting them from
infection, Myers designed
this new more delicate
Mask's present size and novel
design here shown.

The mask is of gauze, the cell
is white tissue. It is the resource
air—protects perfectly and com-
fortably looks much like a face.
Available in London, New York, and
elsewhere. At Myers', 215
N. 4th St., St. Paul, Minn.

2/6

BETTER THAN A MASK.

As a Safeguard against influenza is good
physical condition—feeding fit and strong.
If feeling run down, or only slightly so,
start to-day taking

**SAUNDERS' MALT EXTRACT
OR MALT EXTRACT AND COD LIVER OIL**

It is concentrated nourishment. Gives
great physical endurance. Is splendid for
convalescence.

Get it at All
Grocers' and
Chemists.

UNION IS STRENGTH!!! The Union of the Best Malt, Iron, Extract of
Beet, &c., it is

B. F. X. — B. F. X. — B. F. X. — B. F. X.

WINE TONIC

WILL BUILD UP THE SYSTEM AND HELP YOU TO KEEP WELL.

BEAT THE "FLOOD"

Rep. 60c. 4/2. (B.F.X.) VIM. (B.F.X.) BUY A
Rep. 75c. 2/2. VITALITY. BOTTLE
Wholesale Only—B.F.X. Coy., 12 McKim St., Melbourne.

HOW TO AVOID INFLUENZA

KEEP YOUR LUNGS HEALTHY AND STRONG

Take plenty of Sunshine, Fresh Air and Exercise
Treat promptly a Slight Cough or Cold
Select THE Best Cough Remedy

BONNINGTON'S IRISH MOSS

For Influenza, Coughs, Colds, Bronchitis etc.
See you get BONNINGTON'S—1/6 and 2/6 a Bottle

Bonnington's Medicated Jubes

The Powerful Antiseptic, to keep the Mouth and Throat healthy and free
from germs. Loss of Voice, Sore Throat.

1/2 TIN ALL CHEMISTS



Keep out of the Germ- haunted Train and Tram

They are the worst danger places in these epidemic days — it is in just such crowded spaces that the germ thrives and contagion spreads.

But, how, you say, can you avoid them? You must go to work; you must come home again, and train and tram are your only means of travel.

There is, however, another way — the cheapest, healthiest, pleasantest way.



Buy a Motorcycle

and travel in the Safety of the Pure, Fresh Air

Medical opinion seems divided on many aspects of the epidemic, but on one point is unanimous. Authority after authority asserts that plenty of fresh air is an ideal preventative, and that the disease is practically non-contagious in the open.

Think, then, how a motor-cycle could help to safeguard your health and that of your family, by affording you safe travel to and from the city, or, with the side-car, providing health-giving, economical transportation for you and your family or friends.

Buy Your Motorcycle Now — Choose One of These



The 1919 Pandemic: A Brief Summary



- 14,000 deaths
- More than 500,000 cases in NSW
- 42% of all deaths in City of Sydney were from flu
- Targeted young healthy adults 25-39
- Extraordinary pressure on health facilities
- Jan-Sept more than 25,000 admitted to hospital in NSW when only 2,000 hospital beds available.
- Commonwealth State rivalries/clashes. States went their own way
- Closure of public places
- Border isolation camps
- Public reaction – fear, panic and hysteria
- Wearing of masks